

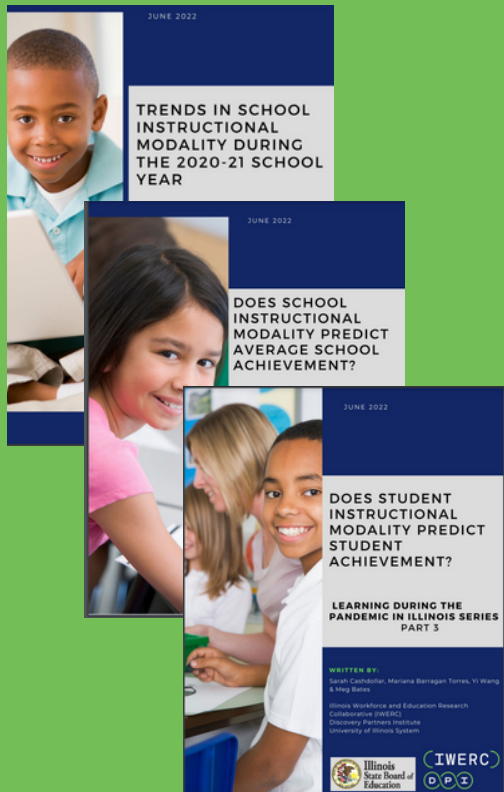
# IWERC UPDATE

SEPTEMBER 2022

<https://dpi.illinois.edu/iwerc>



IWERC released reports this year on many hot topics in education—ranging from teacher shortages to remote learning to trauma-informed education. Read more below.



## Learning During the Pandemic in Illinois

IWERC, in partnership with the Illinois State Board of Education (ISBE), examined how students' participation in different learning modalities was related to student achievement during the 2020-21 school year.

### Key Takeaways:

1. Schools serving different student populations varied substantially in the modality of instruction students experienced. On average, White students spent 50% of the year in-person, while Black and Latinx students spent just 14% and 17% in-person, respectively.
2. In-person instruction predicted higher ELA and math scores in elementary and middle grades. There were no consistent relationships between modality and test scores in grade 11.

IWERC presented their findings to ISBE's Board at their June meeting. These reports were also cited on WBEZ radio and in Advance Illinois' The State We're In 2022 report.

Read the reports [here](#).

## Trauma-Informed Care Research Brief Series

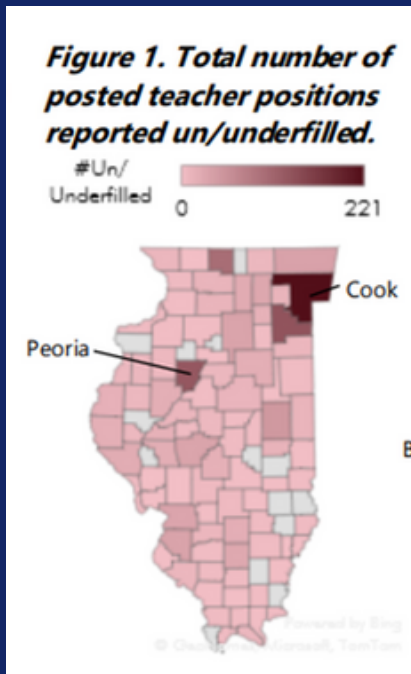
IWERC released a three-part research brief series on trauma-informed care (TIC) in education settings within an Illinois context.

These briefs drew on rigorous scholarly research to provide an accessible introduction to TIC, as well as deep dives into TIC for target populations that are more likely to experience trauma. IWERC co-released pithy and actionable "pocket guides" in English, Spanish, and traditional Chinese.

In partnership with the Illinois Light Initiative, IWERC also hosted a webinar on TIC in May 2022 (as part of Mental Health & Trauma Awareness Month). Excerpts from this work were featured in an IDHS report on Governor Pritzker's Executive Order to Fight Homelessness.

The briefs, a recording of the webinar, and TIC pocket-guides can be found [here](#).





## The Illinois Educator Shortage and Employment Project

In partnership with the Illinois Association of Regional Superintendents of Schools, Illinois State University's Center for the Study of Education Policy, and Goshen Education Consulting, IWERC has produced four reports on the state of the educator (and support staff) shortages. These reports can be found [here](#).

### Key Takeaways:

1. Specific educator shortages in Illinois have been a persistent problem for at least the past 5 years.
2. Chronic shortages of qualified teachers have been most severe for teachers in special education, bilingual education/ESL, mathematics, CTE, foreign language, the arts, library/media specialists, and elementary education.
3. Both urban and rural areas face shortages.
4. Schools also face chronic shortages of support personnel, including counselors, nurses, social workers, and speech-language pathologists.

## Early Childhood Pathways

IWERC categorized the state's early childhood programs across several dimensions and provided a summary of the evidence base for these programs. This report, as well as graphics of program categorizations across dimensions, can be found [here](#).

### Select Takeaways:

1. A majority of IL early childhood programs focus on promoting physical, cognitive, and socio-emotional development.
2. The most common delivery methods include home visiting, early childhood education/care, medical/health support, and case management/service coordination.
3. Nationwide, the programs well-funded by the federal government—such as child care subsidies, Supplemental Nutrition Program for Women, Infants, and Children, and Head Start—have the strongest evidence.
4. Statewide, Child Care Assistance Program has the strongest evidence.



## Coming Soon!

IWERC will release reports on several additional topics before the end of 2022, including:

- Survey of Illinois educators who **stayed, left, or moved teaching positions** after 2020-21
- Survey of Illinois high school seniors (2020-21) on their **college decision-making**
- Analysis of the **Illinois Educator Preparation Profiles** system
- Educational **access mapping** of the state of Illinois
- Analysis of Illinois postsecondary programs producing a **diverse computer science workforce**
- A review of diversity-focused college STEM programming, forthcoming in the *International Journal of STEM Education*

## Many Thanks

IWERC's research is possible due to our dedicated and invested funders, including CME Group Foundation, Crown Family Philanthropies, Joyce Foundation, Pritzker Traubert Foundation, Robert R. McCormick Foundation, Spencer Foundation, Steans Family Foundation, and two anonymous funders. We thank them deeply. We also appreciate all our collaborators and friends—including our Research Advisory Council, Advisory Committee, and the many wonderful folks working in local and state education agencies!